



GAS STATION INVESTMENT

315 N. Bridge Street, Enterprise, Kansas



SALE PRICE: \$700,000 | 1,353 SF BUILDING

DEMOGRAPHICS

	1 mile	3 miles	5 miles
Estimated Population	698	1,010	3,627
Avg. Household Income	\$71,654	\$72,981	\$84,183

- New pumps and tanks installed in 2026
- Existin monument sign
- Unbranded - No fuel contract
- Located on the north side of Enterprise, catching all traffic from Interstate 70 into town
- Located five miles east of Abilene



CLICK HERE TO VIEW MORE LISTING INFORMATION

For More Information Contact:

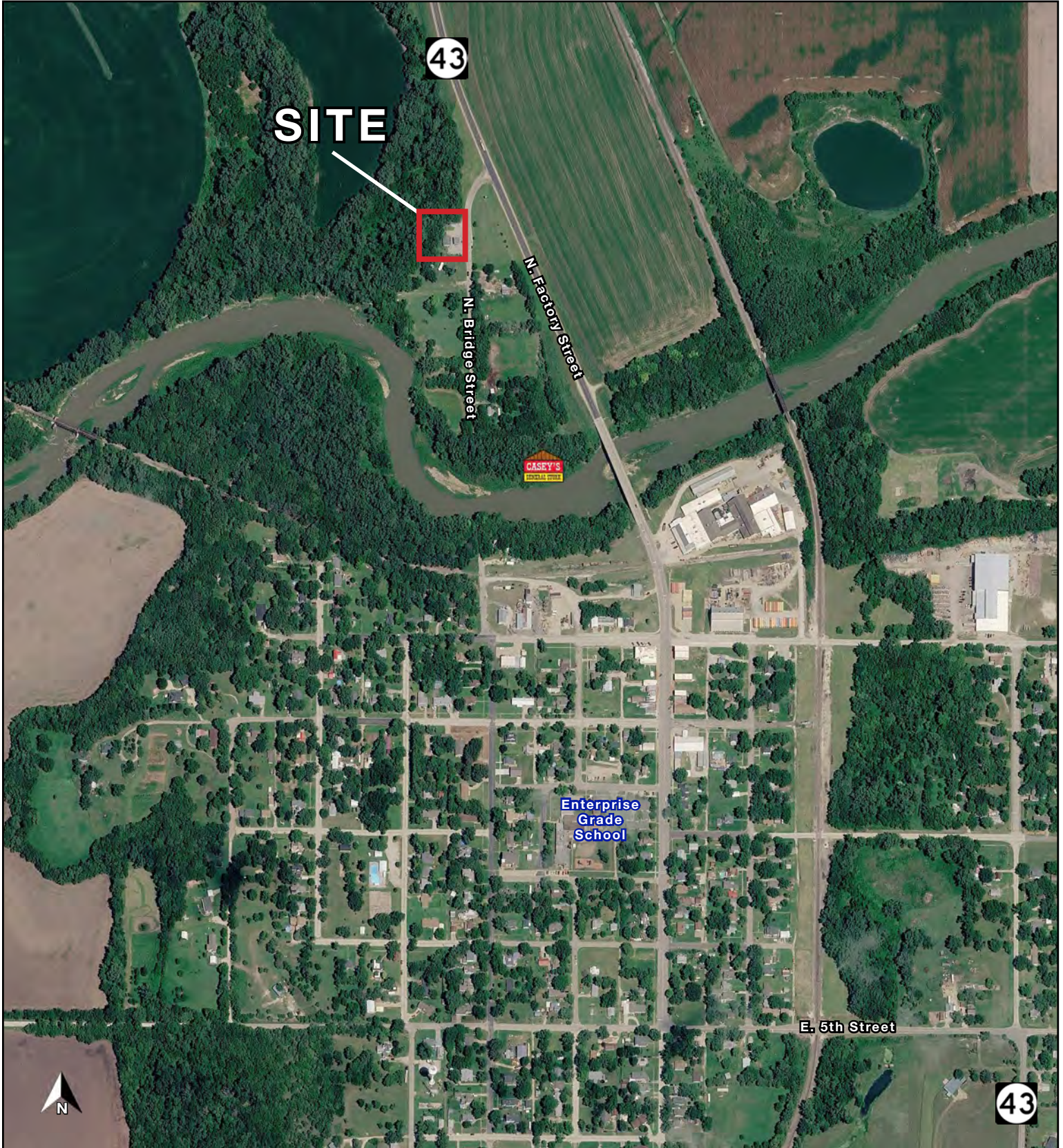
GREG ROBERTS | 816.412.7384 | groberts@blockandco.com

CAMREN SINCLAIR | 816.412.7352 | csinclair@blockandco.com

Exclusive Agents



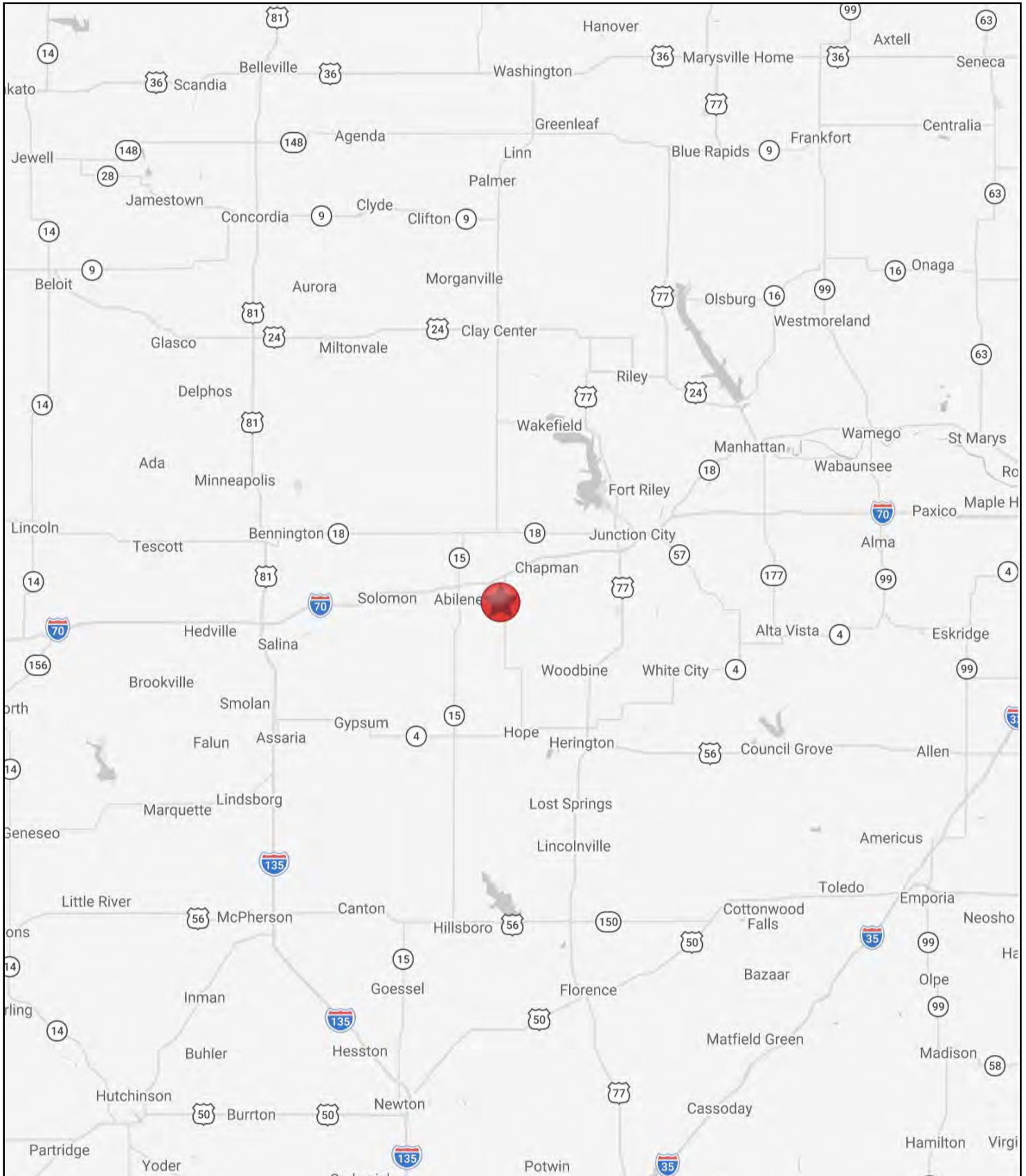
AERIAL

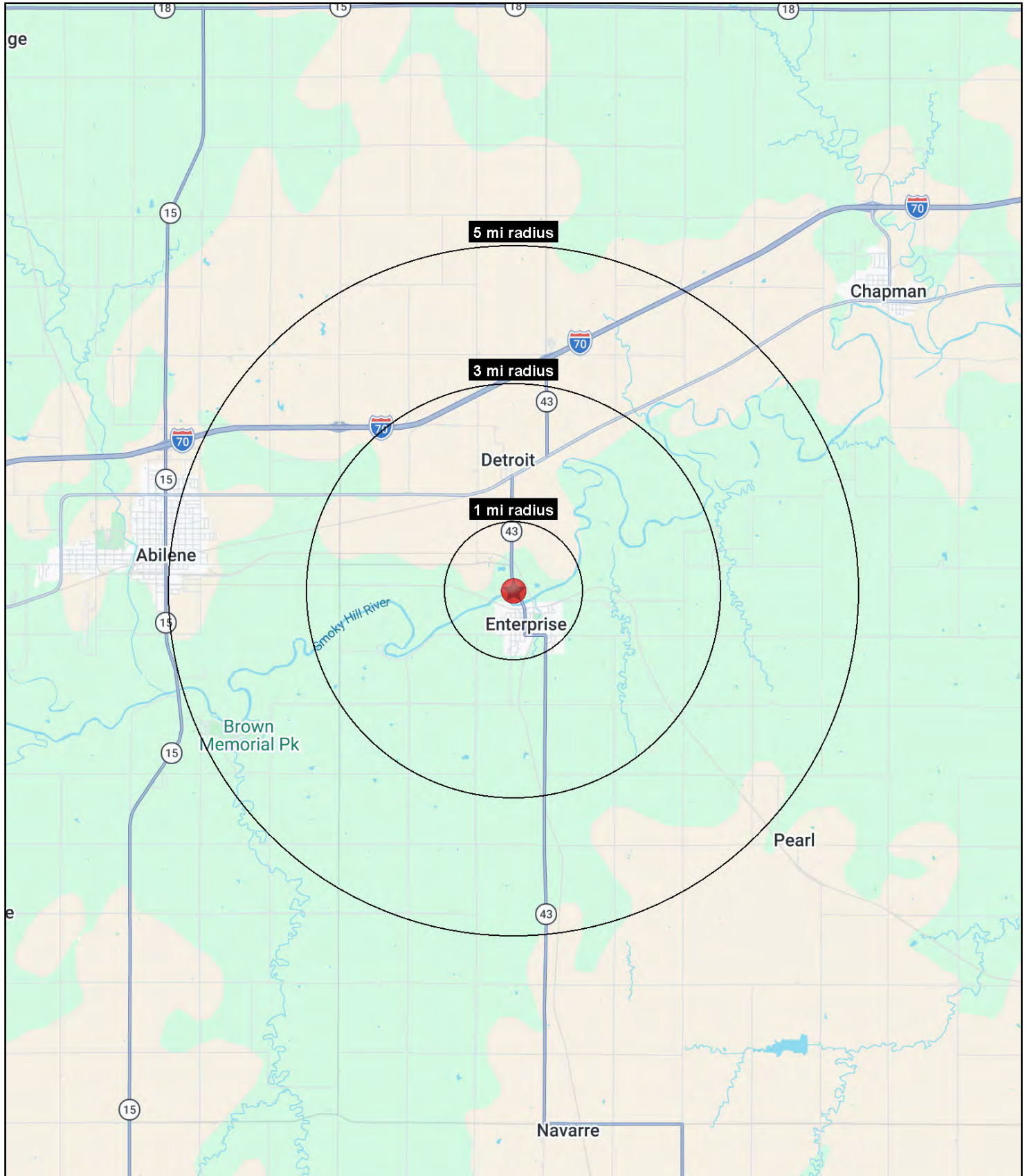




GAS STATION INVESTMENT

315 N. Bridge Street, Enterprise, Kansas







GAS STATION INVESTMENT

315 N. Bridge Street, Enterprise, Kansas

315 N. Bridge Street Enterprise, KS 67441	1 mi radius	3 mi radius	5 mi radius
Population			
2025 Estimated Population	698	1,010	3,627
2030 Projected Population	760	1,098	3,860
2020 Census Population	701	988	3,735
2010 Census Population	823	1,152	4,076
Projected Annual Growth 2025 to 2030	1.8%	1.7%	1.3%
Historical Annual Growth 2010 to 2025	-1.0%	-0.8%	-0.7%
2025 Median Age	39.5	39.7	40.6
Households			
2025 Estimated Households	277	402	1,497
2030 Projected Households	299	433	1,579
2020 Census Households	274	387	1,541
2010 Census Households	297	418	1,620
Projected Annual Growth 2025 to 2030	1.6%	1.5%	1.1%
Historical Annual Growth 2010 to 2025	-0.4%	-0.3%	-0.5%
Race and Ethnicity			
2025 Estimated White	94.0%	93.9%	92.0%
2025 Estimated Black or African American	0.2%	0.3%	1.4%
2025 Estimated Asian or Pacific Islander	0.4%	0.4%	0.5%
2025 Estimated American Indian or Native Alaskan	0.4%	0.4%	0.3%
2025 Estimated Other Races	4.9%	5.0%	5.7%
2025 Estimated Hispanic	4.6%	4.7%	6.7%
Income			
2025 Estimated Average Household Income	\$71,654	\$72,981	\$84,183
2025 Estimated Median Household Income	\$60,737	\$62,014	\$66,638
2025 Estimated Per Capita Income	\$28,861	\$29,412	\$35,132
Education (Age 25+)			
2025 Estimated Elementary (Grade Level 0 to 8)	1.0%	1.0%	2.3%
2025 Estimated Some High School (Grade Level 9 to 11)	6.7%	6.4%	5.0%
2025 Estimated High School Graduate	34.5%	34.2%	28.9%
2025 Estimated Some College	29.3%	29.4%	27.7%
2025 Estimated Associates Degree Only	15.6%	15.5%	13.4%
2025 Estimated Bachelors Degree Only	12.3%	12.6%	18.0%
2025 Estimated Graduate Degree	0.6%	0.9%	4.8%
Business			
2025 Estimated Total Businesses	14	23	92
2025 Estimated Total Employees	133	215	1,025
2025 Estimated Employee Population per Business	9.3	9.3	11.2
2025 Estimated Residential Population per Business	49.1	43.9	39.6